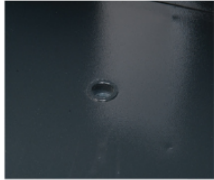


Model No.	External H x W x D (mm)	Internal H x W x D (mm)	Weights	Capacity	In tray /drawer	Shelf
F-H38C/F-H38E	310 x 420 x 355	204 x 314 x 236	37kgs	16 litre	1	-
F-H58C/F-H58E	360 x 490 x 425	236 x 381 x 306	57kgs	28 litre	1	-
F-V58C/F-V58E	500 x 350 x 425	381 x 236 x 306	57kgs	28 litre	1	1
F-V100C/F-V100E	612 x 500 x 470 (without caster) 670 x 500 x 470 (with caster)	470 x 360 x 310	105kgs	52 litre	1 (drawer)	1
F-V180C/F-V180E	810 x 590 x 505 (without caster) 880 x 590 x 505 (with caster)	666 x 446 x 345	180kgs	102 litre	1 (drawer)	2
F-V380C/F-V380E	1320 x 700 x 630 (without caster) 1385 x 700 x 630 (with caster)	1145 x 530 x 460	335kgs	280 kgs	1 (drawer)	3

FEATURES & DESIGN



Mounting Hole



Tongue & Groove



Active Bolt

OPTION FOR LOCK SYSTEM



Key/Combination Lock

This time-tested combination locking device has over a million permutations. The dial features a spy proof cover for extra protection.

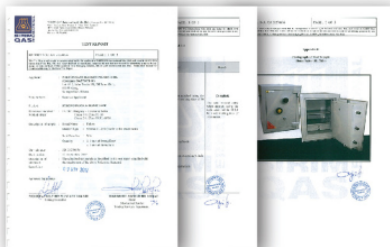


Key/Digital Lock

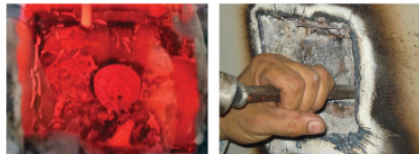
This is a convenient and easy to use feature. Employing the use of an 8-bit microprocessor chip, the digital lock system is operated by simple touch. Your secret code can consist of 4 to 6 digits. You can program your own access code in seconds. A time delay lock-out is activated if the false number is entered more than 3 times.



JIS S 1037 : 1989 FIRE RESISTIVE CONTAINERS



ANSI/UL 687 : 1981 and MS 1297:1992 SPECIFICATION FOR FIRE AND BURGLARY RESISTANT OFFICE SAFES.



SOLID SAFE





A sleek modern design of fire resistive and security safe for personal, home and small office use. It provides the best protection of your documents and valuables against threat of unforeseeable fire and burglary attack.



F-H38C



F-H38E

F-H38

Net Weight: 37kgs
 External Dimension: H310 x W420 x D355
 Internal Dimension: H204 x W314 x D236
 Locking System: combination (dial) or digital
 Features: 1 in-tray, mounting hole



F-H58C



F-H58E

F-H58

Net Weight: 57kgs
 External Dimension: H360 x W490 x D425
 Internal Dimension: H236 x W381 x D306
 Locking System: combination (dial) or digital
 Features: 1 in-tray, mounting hole



F-V58C



F-V58E

F-V58

Net Weight: 57kgs
 External Dimension: H500 x W350 x D425
 Internal Dimension: H381 x W236 x D306
 Locking System: combination (dial) or digital
 Features: 1 in-tray, 1 adjustable shelf, mounting hole



F-V100C



F-V100E

F-V100

Net Weight: 105kgs
 External Dimension: H612 x W500 x D470 (without caster) | H670 x W500 x D470 (with caster)
 Internal Dimension: H470 x W360 x D310
 Locking System: combination (dial) or digital
 Features: 1 lockable drawer, 1 adjustable shelf, mounting hole



F-V180C



F-V180E

F-V180

Net Weight: 180kgs
 External Dimension: H810 x W590 x D505 (without caster) | H880 x W590 x D505 (with caster)
 Internal Dimension: H666 x W446 x D345
 Locking System: combination (dial) or digital
 Features: 1 lockable drawer, 2 adjustable shelf, mounting hole



F-V380C



F-V380E

F-V380

Net Weight: 335kgs
 External Dimension: H1320 x W700 x D630 (without caster) | H1385 x W700 x D630 (with caster)
 Internal Dimension: H1145 x W530 x D460
 Locking System: combination (dial) or digital
 Features: 1 lockable drawer, 3 adjustable shelf, mounting hole