

New Ceres Safe

Fire Resistant safes for home and Office.



Model: 36-OK

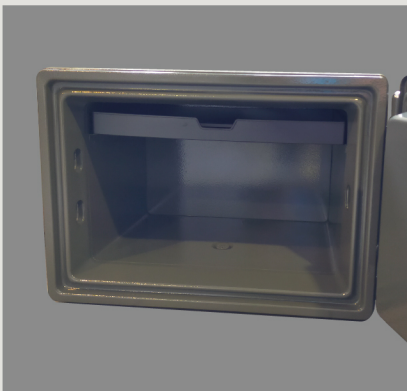
Model: 68-OK

Model: LS-106

Certified by:

KEY FEATURES

- Locking system: Electronic lock + key lock and master key to open the safe.
- Comes with bottom bolting down hole for floor mounting.
- Comes standard with one plastic tray and adjustable shelf.
- One-hour fire rated certified by UL72/ Underwriter's Lab, JIS S - 1037/ Japan Testing Center and SPCR002/ Swedish national Testing & Research Institute.
- Solid protective door thickness of 30mm and body 46mm.
- Optional Electronic lock for Model LS - 106.



Model: 36-OK



Model: 68-OK



Model: LS-106

Model	External Dimension (mm) H x W x D	Internal Dimension (mm) H x W x D	Weight (Kg)
1. 36 - OK	356 H x 506 W x 417 D	250 H x 383 W x 284 D	50kg
2. 68 - OK	515 H x 432 W x 492 D	385 H x 310 W x 325 D	75kg
3. LS - 106	675 H x 493 W x 554 D	507 H x 344 W x 340 D	110kg



ISO 9001
CERT. NO. : AR 3005